

# House & Land Package



Lot 123 Mertz Place  
Meadows

Waverly Alf.  
30.19  
squares

House & Land from only

**\$408,980\***

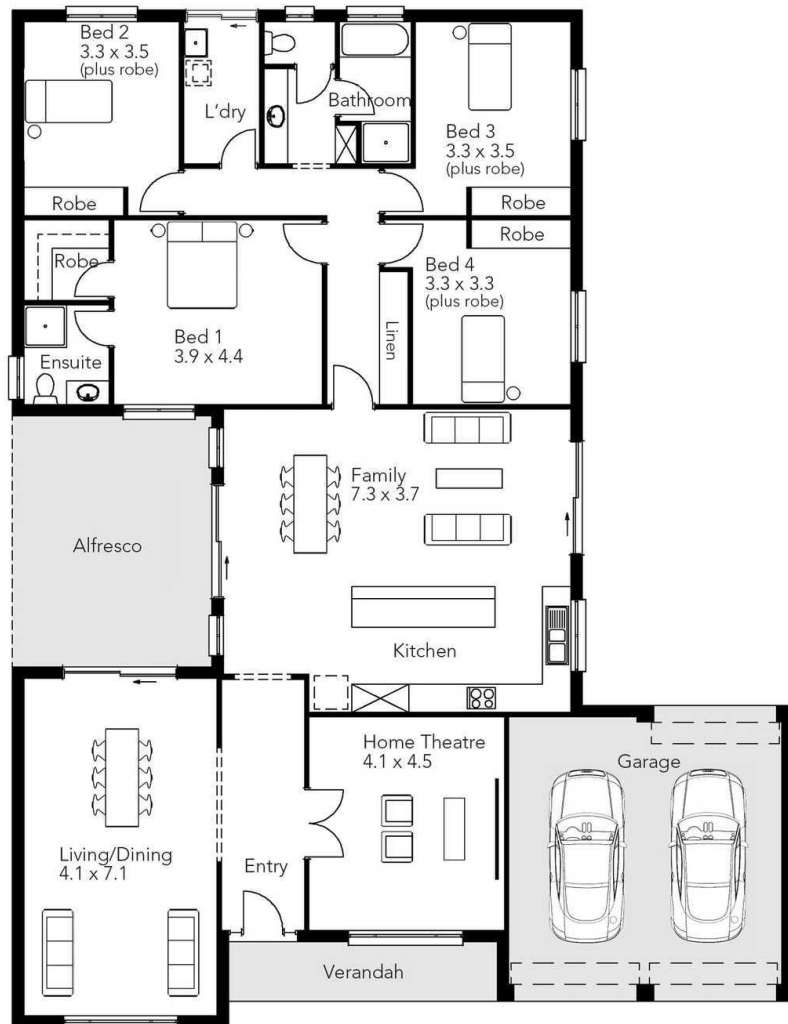
including double garage

### Specifications

Living Area : 213.98 sqm  
Verandah : 7.06 sqm  
Garage : 37.25 sqm  
Total : 280.51 sqm  
Land Size : 813.00 sqm

### You get all this & more

- Double Garage
- Flat benchtop
- Stainless steel appliances
- 25 degree roof pitch
- Insulation to ceilings and external walls
- Elevation upgrade
- Flooring allowance
- Ducted reverse cycle air-conditioning
- Colorbond Roof
- Single span panel lift door with remote auto unit
- Estate encumbrances included
- 3 month maintenance and 25 year structural guarantee
- Siteworks and footings allowance



**STATESMAN**  
HOMES

Unbeaten  
on Price  
and Quality

[www.statesman-homes.com.au](http://www.statesman-homes.com.au)

**Anthony Tovey**  
M 0403 746 675  
[anthony@statesman-homes.com.au](mailto:anthony@statesman-homes.com.au)  
08 8366 0080

\* Conditions apply. Certain elevations may not match the particular floor plan published in this package and, as such, all floor plans and elevations are for illustration purposes only. Land subject to availability. The land referred to in this promotion is not owned by us. We make no representation and, to the extent permissible at law, we disclaim all liability, as to the suitability of the land to build on, or the suitability of any house design, or otherwise. You must satisfy yourself of that by inspection, or by taking professional advice, or otherwise. Pricing is indicative only and based on standard costings. Price may vary depending on selections, engineering, council and utility requirements and adjustments to allowances. All packages subject to final council approval. Alan Hickinbotham Pty Ltd ABN 13 007 567 222, RLA 230557. Construction Services Australia Pty Ltd ABN 99 007 641 787, Building Licence G8969. © Copyright 2016.